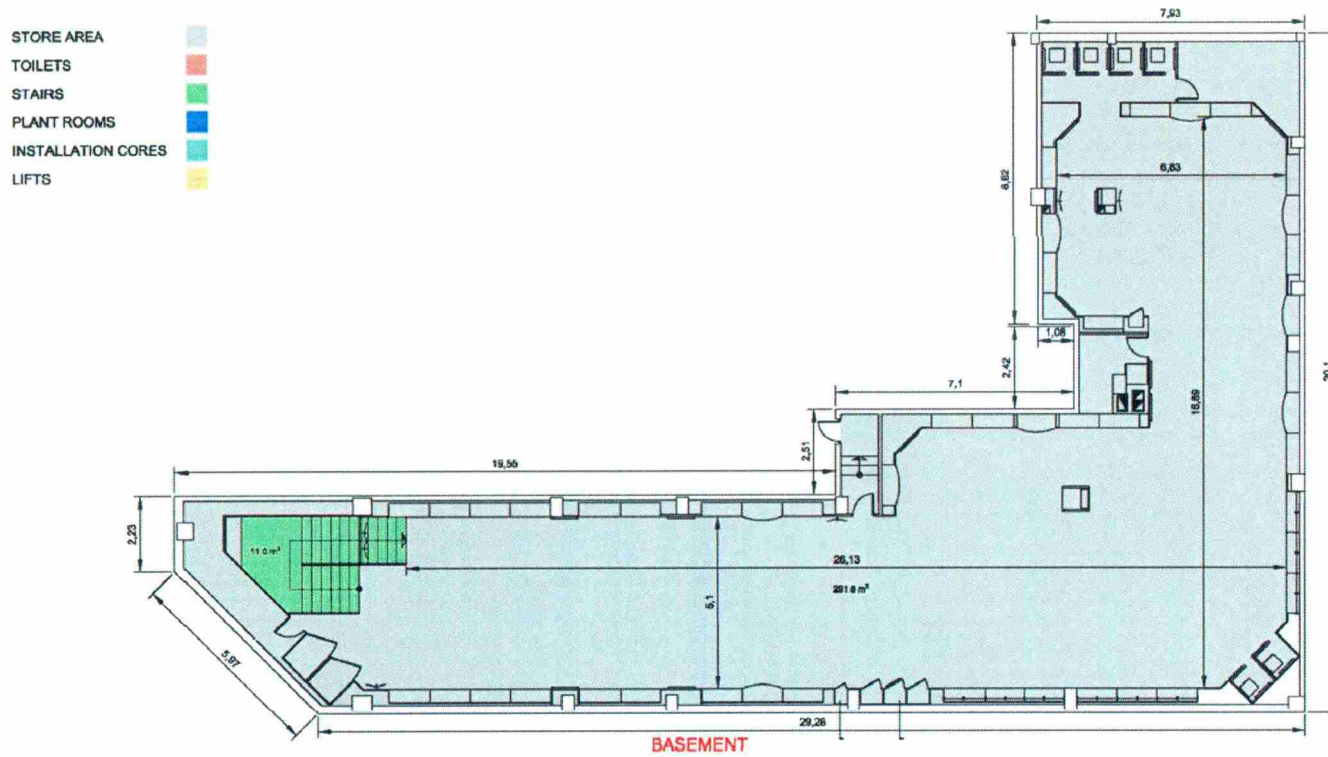


Paz, Vitoria

Basement

Net Internal Area Plan

This drawing is indicative of the area measured – Not to Scale



BASEMENT AREAS

NET INTERNAL AREA

STORE AREA	291.8 m ²
SUBTOTAL	291.8 m ²

TOTAL INTERNAL AREA

TOTAL	302.8 m ²
-------	----------------------

AREAS EXCLUDED FROM THE NET INTERNAL AREA

STAIRS	11.0 m ²
SUBTOTAL	11.0 m ²

TOTAL CONSTRUCTED AREA

TOTAL	327.9 m ²
-------	----------------------

Drawing Number: 1 Date: November 2005

Paz, Vitoria

Total Areas

Net Internal Area Plan

This drawing is indicative of the area measured – Not to Scale

BASEMENT AREAS

NET INTERNAL AREA	
STORE AREA	291.8 m ²
SUBTOTAL	291.8 m ²
TOTAL INTERNAL AREA	
TOTAL	302.8 m ²

AREAS EXCLUDED FROM THE NET INTERNAL AREA	
STAIRS	11.0 m ²
SUBTOTAL	11.0 m ²
TOTAL CONSTRUCTED AREA	
TOTAL	327.9 m ²

GROUND FLOOR AREAS

NET INTERNAL AREA	
STORE AREA	283.0 m ²
TOILETS	15.1 m ²
SUBTOTAL	298.1 m ²
TOTAL INTERNAL AREA	
TOTAL	312.2 m ²

AREAS EXCLUDED FROM THE NET INTERNAL AREA	
STAIRS	14.1 m ²
SUBTOTAL	14.1 m ²
TOTAL CONSTRUCTED AREA	
TOTAL	327.0 m ²

TOTAL AREAS

NET INTERNAL AREA	
STORE AREA	574.8 m ²
TOILETS	15.1 m ²
SUBTOTAL	589.9 m ²
TOTAL INTERNAL AREA	
TOTAL	615.0 m ²

AREAS EXCLUDED FROM THE NET INTERNAL AREA	
STAIRS	25.1 m ²
SUBTOTAL	25.1 m ²
TOTAL CONSTRUCTED AREA	
TOTAL	654.9 m ²